

## IMPORTANT NOTICE FOR FISHING VESSELS OFF THE SOUTH COAST OF IRELAND

**3D SEISMIC SURVEY IN THE CELTIC SEA - SOUTH COAST OF IRELAND AT DEEP KINSALE AND MIZZEN  
 OPERATED BY CGG, ON BEHALF OF FASTNET OIL & GAS IRELAND LIMITED.**



**Vessel details:** SR/V "VANTAGE" - Callsign: LMHY3 (Seismic Vessel)  
 M/V "OMS RESOLUTION" - Callsign: HP5135 (Support Vessel)  
 M/V "STORMBAS II" - Callsign: V4EM2 (Chase Vessel)  
 M/V "ARTEMIS ANGLER" - Callsign: LAGU7 (Seismic Vessel)

**Radio:** Vessels always listening on VHF Ch.16

**Scope:** Geophysical survey involving the acquisition of 3D seismic data

**Tow:** Vessel will tow 10 cables, 6km long. Width of spread is 900m

**Dates:** Mid April until mid-June 2013 approximately – weather permitting

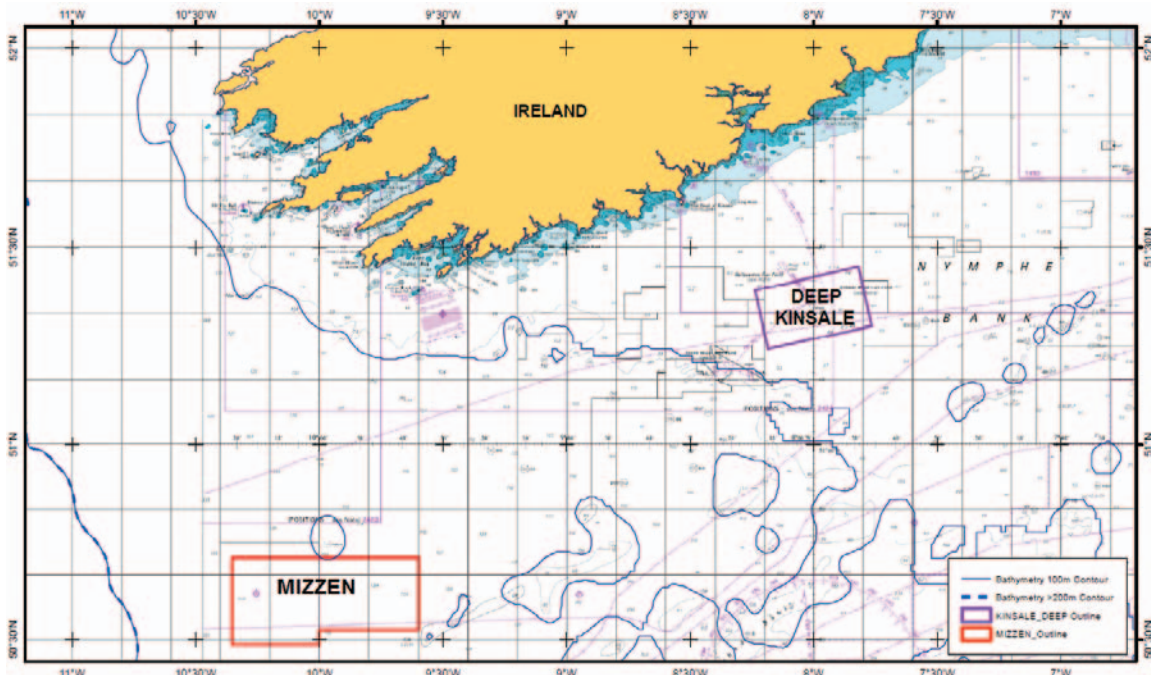
**Coordinates for the two survey blocks are as follows:-**

### Deep Kinsale

Point	Latitude (WGS84)	Longitude (WGS84)
1	51°14'32.46"N	008°11'10.72"W
2	51°23'31.06"N	008°14'20.42"W
3	51°27'05.42"N	007°49'11.86"W
4	51°18'09.39"N	007°45'57.44"W

### Mizen

Point	Latitude	Longitude
1	50°42'34.46"N	010°21'07.32"W
2	50°29'15.50"N	010°21'05.88"W
3	50°29'15.89"N	010°00'00.04"W
4	50°31'30.39"N	009°59'59.99"W
5	50°31'30.11"N	009°36'00.12"W
6	50°42'37.70"N	009°35'59.61"W



**All vessels, particularly those engaged in fishing, are requested to give the 'SR/V "VANTAGE" and support vessels a wide berth and keep a close look out in the relevant areas.**

*For more detailed information regarding this survey please refer to Marine Notice No 14 of 2013 or contact Sinbad Marine Services during normal working hours*